

Trelleborg



TM3000 for sustainable farming



The TM3000, designed according to the Blue Tire Technology, is the Trelleborg's answer to the latest and future generations of harvesters, combine machines and spreaders. A new tread pattern, along with the advanced carcass design, maximise the load capacity of the tire at low inflation pressure.

The TM3000 respects the soil and boosts crop yield while preserving the environment. Matching sustainable and precision farming approaches, it is the right choice to increase the productivity of your farm, lowering overall operating costs whilst looking after the safety and comfort of the operators.



**HIGH
STABILITY**



**SUPERIOR
FLOTATION**



**RESISTANCE
TO STUBBLE DAMAGE**



**EXCELLENT
SELF-CLEANING**

TM3000 for harvester and combine machines

- 1 Sharp inclination of the lug to provide excellent stability on slopes.
- 2 Inter-lug terracing at the base of the lug to maximise the self-cleaning capability of the tire.
- 3 Increased lug base diameter to improve manoeuvrability and reduce stress in the shoulder area.
- 4 Rounded shoulder profile, to prevent stubble damage, results in high durability.
- 5 Rounded lug base to support the tire during combine steering.



Extra wide footprint

The latest tests performed show that the TM3000's footprint is up to 5% wider than its premium competitor. The larger contact area significantly reduces soil compaction, providing high flotation characteristics, respecting the soil and preserving its organic life.

Footprint comparison - Index

Higher is better

**Up to +5%
wider footprint
vs. a Premium Competitor**



Reference size: IF 800/70R32 CFO
Tire Load: 13,175 kg
Field conditions: 15 Cyc
Inflation pressure: 2,4 bar

Flotation comparison - Index

Lower is better



**+5% flotation
vs. a Premium Competitor**

TM3000 for spreader and sprayers machines

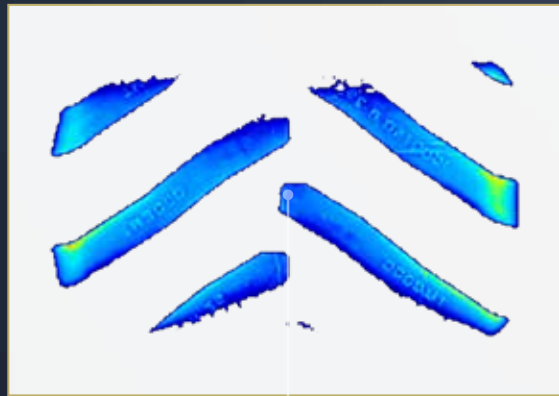
The new generation of spreaders and sprayers show an increasing need for carrying higher loads, while constantly reducing the contact pressure on the field, to limit soil compaction during operations.

- 1 Higher number of lugs compared to main competitors available in the market, improving wear.
- 2 Wide width for maximum flotation and minimum soil compaction.
- 3 Extra lug, in addition to the interlug terrace, to enhance the self-cleaning capability of the tire.
- 4 Rounded shoulder for maximum soil respect.
- 5 ProgressiveTraction® design, to boost traction as well as regular wear.



Low soil compaction

The TM3000 offers the benefits of the VF construction and, compared to a non-VF option, it allows the machine to carry up to 40 percent more load at the same pressure, or to inflate the tire with up to 40 percent less pressure while carrying the same load. In addition, the ProgressiveTraction® technology applied on the tread increases traction and helps protecting the tire from stubble damage, thereby improving road wear resistance and comfort. The rounded shoulder of the tread makes the TM3000 very respectful on soil and grassland, and improves machine handling.



**Wide footprint area,
low soil compaction**



TM3000

Size	Tread Pattern	SW mm	OD mm	SLR mm	RC mm	SRI	Rim	Permitted Rims	Type
VF 1000/50R25 184D*	TM3000	1030	1640	710	4870	775	36.0 TH		Tubeless
VF 620/70R26 CF0 173A8	TM3000	595	1500	645	4530	725	DW20B		Tubeless
VF 750/50R26 169D*	TM3000	750	1415	615	4230	675	DW27B	DW25B	Tubeless
VF 750/65R26 CF0 177A8 (177B)	TM3000	740	1649	710	4882	775	DW25B	DW25B	Tubeless
650/75R32 172A8	TM3000	618	1817	820	5500	850	DW20B		Tubeless
IF 800/65R32 CF0 178A8 °	TM3000	755	1850	810	5575	875	DW27B		Tubeless
IF 800/70R32 CF0 182A8 °	TM3000	775	1950	850	5845	900	DW27B		Tubeless
IF 900/65R32 CF0 191A8 (191B) °	TM3000	900	1985	875	5975	925	DW31B	DW30B	Tubeless
VF 1050/50R32 198D* °	TM3000	1035	1860	820	5570	875	36.00 VA		Tubeless
IF 800/70R38 CF0 187A8°	TM3000	780	2050	910	6190	975	DW27B		Tubeless

* = spreader tire tread pattern

° = for grain cart application also



Printed on
recycled paper



Discover our website

Follow us

