



# Ventura

## FORESTRY MACHINES

### TFVJP - LOODON

#### STONE AND FORESTRY MULCHER AND SOIL STABILIZER

The TFVJP model is designed to handle high performance and heavy-duty work. Manufactured with a double frame wear resistant HARDOX plate. Its structure and composition allows the attachment to crush stone up to 15 cm and brush up to 20 cm [8 inch] in diameter. Its main chassis is made of SCM-700 high yield strength steel, with one counter blade adjustable. Its robust free-wheel gearbox is protected. The ergonomic design of the shredder allows an excellent visibility to the operator, great cutting efficiency and a long implement life. It has a rear flattener in its standard equipment and an optional rear control roller.



max. 20 cm  
[8 inch]



60 - 130 HP

#### STANDARD DATA

- Crush stone up to 15 cm and wood up to 20 cm [8 inch]
- Reinforced frame with High Yield Steel SCM.700
- Free-wheel gearbox Bondioli & Pavesi
- Transmission with 5-7 belts type 'B' profile
- Third point category II
- Hydraulic reinforced rear door
- Double chain protection
- Rear flattener and one counter blade adjustable.
- Crusher hammers with double tip of Tungsten Carbide (Widia)
- Reinforced skids



#### OPTIONS PRODUCT

- Transmission with torque limiter
- Mechanical Rear Pushing bar or Hydraulic Rear Pushing bar
- Reinforced rake for Rear Pushing bar
- Rear roller control
- Reversible gearbox
- Reinforced double-widia hammer



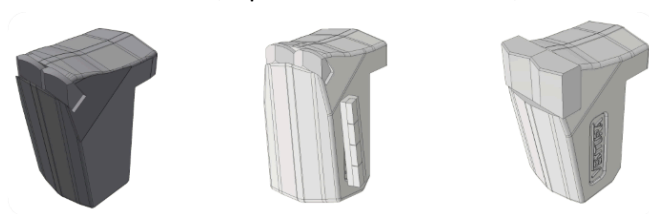
## TECHNICAL DATA

<b>Working width</b>	Cm / inch	<b>100 / 40</b>	<b>130 / 51</b>	<b>150 / 59</b>	<b>180 / 71</b>
<b>Overall width</b>	Cm / inch	130 / 51	160 / 63	180 / 71	210 / 83
<b>Tractor power</b>	HP	60 - 120	60 - 130	70 - 130	70 - 130
<b>PTO</b>	RPM	1000	1000	1000	1000
<b>Weight</b>	Kg/lb	1190	1270	1350	1430
<b>Belts</b>	N.º	5	5	5	7
<b>Rotor diameter</b>	Cm/inch	470 / 18,5	470 / 18,5	470 / 18,5	470 / 18,5
<b>Fixed hammers</b>	N.º	16 + 2**	20+2**	24+2	28+2

\*The rotor diameter specified in the table refers to the rotor with the standard hammer.

\*\*Every VENTURA rotor has two special lateral hammers (central hammer of the image below).

Ventura Hammers: Standard / Special lateral Hammer / Reinforced hammer



**TFVJP 'LOODON'**  
by VENTURA

Forestry Gearbox Bondioli & Pavesi - Free Wheel  
OPTIONS: REVERSIBLE, TRANS. 540/1000 RPM...

OPTIONAL REAR PUSHING BAR  
HYDRAULIC or MECHANICAL

Limiter Counterblade Adjustable  
HB-500

WORK EFFICIENCY

7 Timing Belts  
TYPE 'B' PROFILE

Fixed Widia Hammer.  
Double tip of Widia.  
TUNGSTEN CARBIDE

Double heavy duty - Chain Protection  
Frame made of High Yield Steel

HARDNESS & RESISTANCE  
SCM-700 STREX

STANDARD REINFORCED SKID WITH  
HB-400 ANTIWEAR STEEL

Double Frame with  
HB-400 ANTIWEAR STEEL  
FINISHING & LIABILITY

Bearing and Transmission  
Leading brands.  
Lifetime Expansion (SKF, NSK...)

This document is purely informative. This is an explanatory guide to understand the VENTURA machinery.

## EMAIL

info@venturamaq.com

## WEB

www.venturamaq.com