



## EN USAGE AND CHARACTERISTICS

- Koop KD192 single cylinder diesel engine 10hp – 3000r/min, new generation STAGE V with lower consumption.
- Powerful hydraulic pump.
- Independent hydraulic traveling motor
- Durable 360 ° superstructure swing engine **EATON USA**.
- High standard hydraulic system of valves and controls.
- 2 hydraulic remote ports on the edge of the boom (for use of digger / hammer).
- Boom with hydraulic pipes installed in the center of its upper part to avoid damage.
- Safety lever to lock the main functions of the machine.
- Protective bar with canopy.
- Maximize stability when digging with the front grader blade.
- Rear openable door for easy access during maintenance.
- Standard equipment includes electric starter with 12V starter, hour meter and removable canopy.
- With a wide range of accessories and tools.
- Easy to use with international standard ISO controls.
- LED work light on the boom.
- Digging force in the bucket 900kg.
- Includes a bucket 400mm.
- Fits through door (93cm).
- Fuel tank 5.5L.
- EC Conformity.

**M**

€



hp



mm



360°



L/min



bar



km/h

**EB09**

900

KOOP KD192 - 10hp

400

360

19

160

1.3

### ACCESSORIES

**EB10QUICK**  
**EB10AUGER**  
**EB10HAMMER**  
**EB10BUCKET20**  
**EB10BUCKET80LEVEL**  
**EB10BUCKET80TILT**

Quick attach  
Hydraulic drill with auger  
Hammer  
Bucket 200mm  
Leveling Bucket 800mm  
Hydraulic bucket tilt 800mm

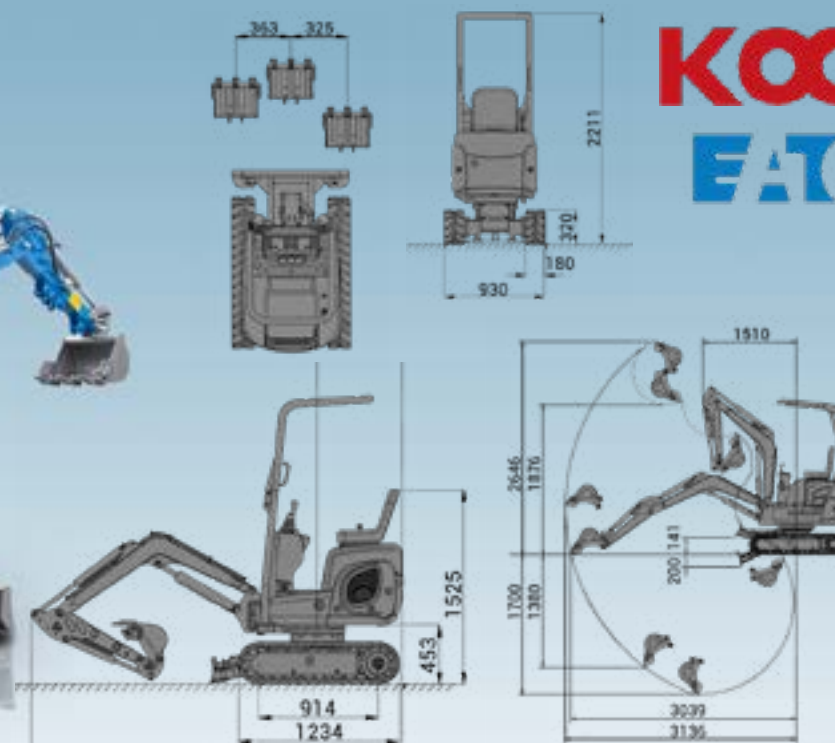
**EB10THUMB**  
**EB10RIPPER**  
**EB10RAKE**  
**EB10GRAPPLER**

Thumb  
Ripper  
Rake  
Grappler

# EXCAVATOR EB10

**GRAECUS**

**KOOP  
EATON**



## EN USAGE AND CHARACTERISTICS

- Koop KD192 single cylinder diesel engine 10hp – 3000r/min, new generation STAGE V with lower consumption.
- Powerful hydraulic pump **KDK JAPAN**.
- Independent hydraulic traveling motor **EATON USA**.
- Durable 360 ° superstructure swing engine **EATON USA**.
- High standard hydraulic system of valves and controls.
- 2 hydraulic remote ports on the edge of the boom (for use of digger / hammer).
- Boom with hydraulic pipes installed in the center of its upper part to avoid damage.
- Safety lever to lock the main functions of the machine.
- Folding protective bar at the front for easy transport in vans/trucks and its entry into indoor spaces.
- Compact cast counterweight on the back successfully improves performance.
- Maximize stability when digging with the front grader blade.
- The vertically opening hood exposes most of the engine providing easier access to components.
- Standard equipment includes electric starter with 12V starter, hour meter and removable canopy.
- With a wide range of accessories and tools.
- Easy to use with international standard ISO controls.
- LED work light on the boom.
- Digging force in the bucket 1000kg.
- Includes a bucket 400mm.
- Fits through door (93cm).
- Fuel tank 11L.
- EC Conformity.

**M**

€



hp



mm



360°



L/min



bar



km/h

**EB10**

950

KOOP KD192 - 10hp

400

360

16.6

160

1.5

ACCESSORIES

**EB10QUICK**  
**EB10AUGER**  
**EB10HAMMER**  
**EB10BUCKET20**  
**EB10BUCKET80LEVEL**  
**EB10BUCKET80TILT**

Quick attach  
Hydraulic drill with auger  
Hammer  
Bucket 200mm  
Leveling Bucket 800mm  
Hydraulic bucket tilt 800mm

**EB10THUMB**  
**EB10RIPPER**  
**EB10RAKE**  
**EB10GRAPPLER**

Thumb  
Ripper  
Rake  
Grappler



## EN USAGE AND CHARACTERISTICS

- Boom swing, improves use in small places and along the wall.
- Koop KD192 single cylinder diesel engine 10hp – 3000r/min, new generation STAGE V with lower consumption.
- Powerful hydraulic pump **KDK JAPAN**.
- Independent hydraulic traveling motor **EATON USA**.
- Durable 360 ° superstructure swing engine **EATON USA**.
- High standard hydraulic system of valves and controls.
- 2 hydraulic remote ports on the edge of the boom (for use of digger / hammer).
- Boom with hydraulic pipes installed in the center of its upper part to avoid damage.
- Safety lever to lock the main functions of the machine.
- Folding protective bar at the front for easy transport in vans/trucks and its entry into indoor spaces.
- Compact cast counterweight on the back successfully improves performance.
- Maximize stability when digging with the front grader blade.
- The vertically opening hood exposes most of the engine providing easier access to components.
- Standard equipment includes electric starter with 12V starter, hour meter and removable canopy.
- With a wide range of accessories and tools.
- Easy to use with international standard ISO controls.
- LED work light on the boom.
- Digging force in the bucket 1000kg.
- Includes a bucket 400mm.
- Fits through door (93cm).
- Fuel tank 11L.
- EC Conformity.

M	€							
		kg	hp	mm	°	L/min	bar	km/h
<b>EB10-BOOM</b>		1010	KOOP KD192 - 10hp	400	360	16.6	160	1.5

### ACCESSORIES

**EB10QUICK**  
**EB10AUGER**  
**EB10HAMMER**  
**EB10BUCKET20**  
**EB10BUCKET80LEVEL**  
**EB10BUCKET80TILT**

Quick attach  
 Hydraulic drill with auger  
 Hammer  
 Bucket 200mm  
 Leveling Bucket 800mm  
 Hydraulic bucket tilt 800mm

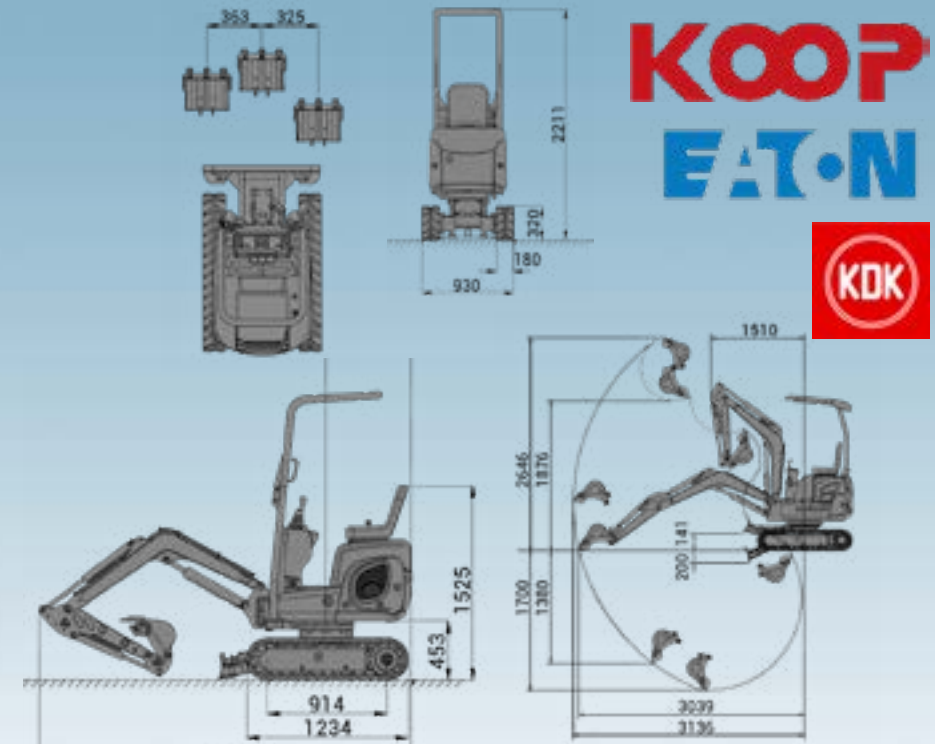
**EB10THUMB**  
**EB10RIPPER**  
**EB10RAKE**  
**EB10GRAPPLER**

Thumb  
 Ripper  
 Rake  
 Grappler



# EXCAVATOR **EB10-XL** with boom swing and extendable undercarriage

**GRAECUS**



## EN USAGE AND CHARACTERISTICS

- Extendable undercarriage 80 – 95 cm.
- Boom swing, improves use in small places and along the wall.
- The width of the leveling blade can be easily and quickly adjusted with a pin to match the width of the extendable tracks.
- Koop KD192 single cylinder diesel engine 10hp – 3000r/min, new generation STAGE V with lower consumption.
- Powerful hydraulic pump **KDK JAPAN**.
- Independent hydraulic traveling motor **EATON USA**.
- Durable 360 ° superstructure swing engine **EATON USA**.
- High standard hydraulic system of valves and controls.
- 2 hydraulic remote ports on the edge of the boom (for use of digger / hammer).
- Boom with hydraulic pipes installed in the center of its upper part to avoid damage.
- Safety lever to lock the main functions of the machine.
- Folding protective bar at the front for easy transport in vans/trucks and its entry into indoor spaces.
- Compact cast counterweight on the back successfully improves performance.
- Maximize stability when digging with the front grader blade.
- The vertically opening hood exposes most of the engine providing easier access to components.
- Standard equipment includes electric starter with 12V starter, hour meter and removable canopy.
- With a wide range of accessories and tools.
- Easy to use with international standard ISO controls.
- LED work light on the boom.
- Digging force in the bucket 1000kg.
- Includes a bucket 400mm.
- Fits through door (93cm).
- Fuel tank 11L.
- EC Conformity.

**M**

€



hp



mm



360°



L/min



bar



km/h

**EB10-XL**

1060

KOOP KD192 - 10hp

400

360

16.6

160

1.5

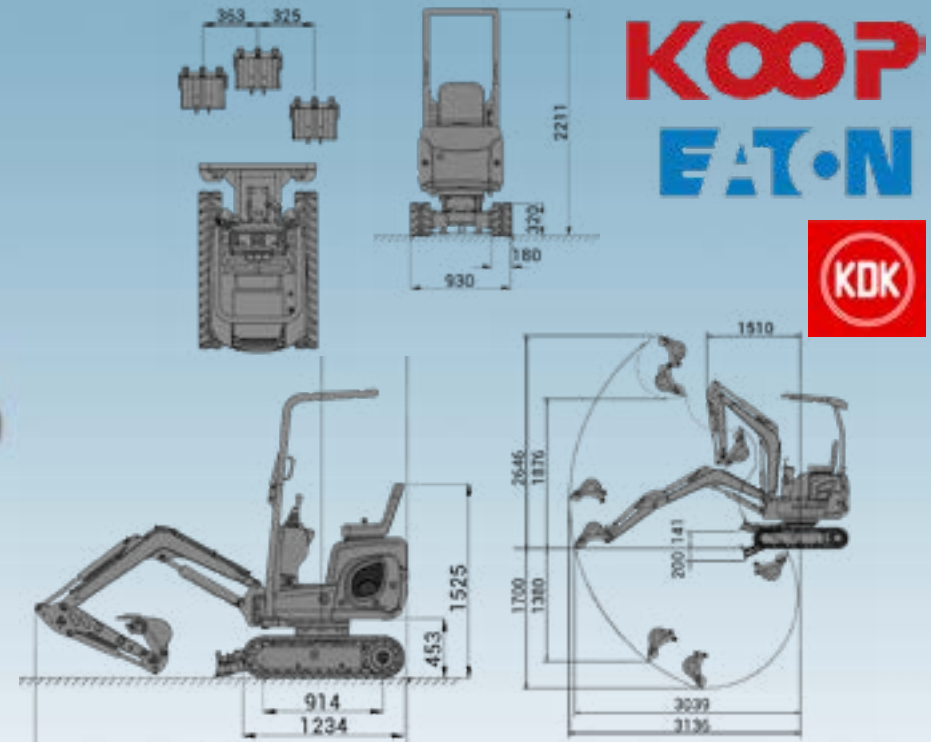
### ACCESSORIES

**EB10QUICK**  
**EB10AUGER**  
**EB10HAMMER**  
**EB10BUCKET20**  
**EB10BUCKET80LEVEL**  
**EB10BUCKET80TILT**

Quick attach  
Hydraulic drill with auger  
Hammer  
Bucket 200mm  
Leveling Bucket 800mm  
Hydraulic bucket tilt 800mm

**EB10THUMB**  
**EB10RIPPER**  
**EB10RAKE**  
**EB10GRAPPLER**

Thumb  
Ripper  
Rake  
Grappler



## EN USAGE AND CHARACTERISTICS

- Side levers improve speed and reduce fatigue while working.
- Extendable undercarriage 80 – 95 cm.
- Boom swing, improves use in small places and along the wall.
- The width of the leveling blade can be easily and quickly adjusted with a pin to match the width of the extendable tracks.
- Koop KD192 single cylinder diesel engine 10hp – 3000r/min, new generation STAGE V with lower consumption.
- Powerful hydraulic pump **KDK JAPAN**.
- Independent hydraulic traveling motor **EATON USA**.
- Durable 360 ° superstructure swing engine **EATON USA**.
- High standard hydraulic system of valves and controls.
- 2 hydraulic remote ports on the edge of the boom (for use of digger / hammer).
- Boom with hydraulic pipes installed in the center of its upper part to avoid damage.
- Safety lever to lock the main functions of the machine.
- Folding protective bar at the front for easy transport in vans/trucks and its entry into indoor spaces.
- Compact cast counterweight on the back successfully improves performance.
- Maximize stability when digging with the front grader blade.
- The vertically opening hood exposes most of the engine providing easier access to components.
- Standard equipment includes electric starter with 12V starter, hour meter and removable canopy.
- With a wide range of accessories and tools.
- Easy to use with international standard ISO controls.
- LED work light on the boom.
- Digging force in the bucket 1000kg.
- Includes a bucket 400mm.
- Fits through door (93cm).
- Fuel tank 11L.
- EC Conformity.

**M**

€



hp



mm



360°



L/min



bar



km/h

**EB10-PRO**

1150

KOOP KD192 - 10hp

400

360

16.6

160

1.5

ACCESSORIES

**EB10QUICK**  
**EB10AUGER**  
**EB10HAMMER**  
**EB10BUCKET20**  
**EB10BUCKET80LEVEL**  
**EB10BUCKET80TILT**

Quick attach  
Hydraulic drill with auger  
Hammer  
Bucket 200mm  
Leveling Bucket 800mm  
Hydraulic bucket tilt 800mm

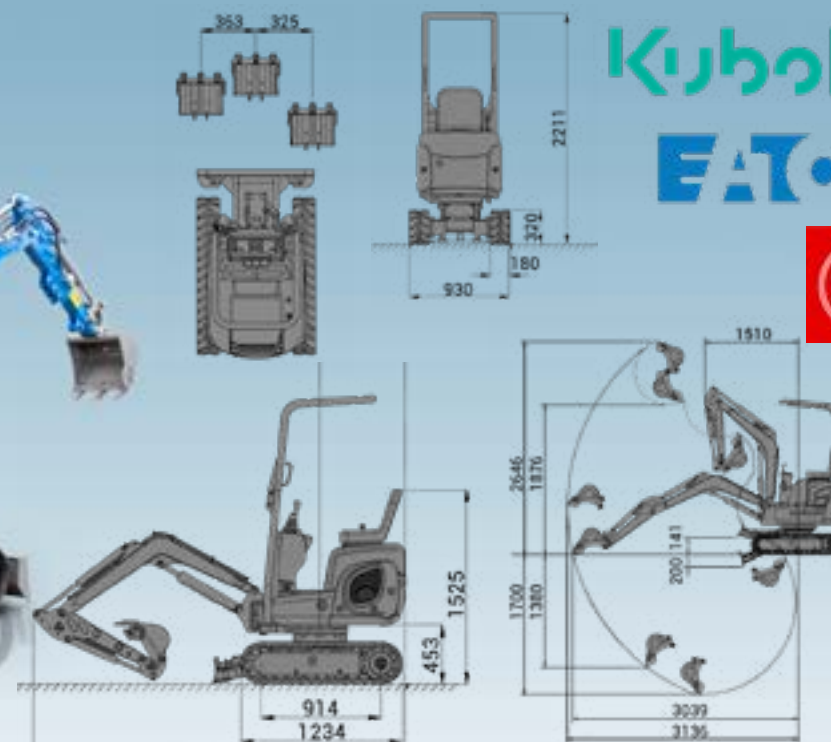
**EB10THUMB**  
**EB10RIPPER**  
**EB10RAKE**  
**EB10GRAPPLER**

Thumb  
Ripper  
Rake  
Grappler

# EXCAVATOR **EB12-BOOM** with boom swing

**GRAECUS**

**Kubota**  
**EATON**



## EN USAGE AND CHARACTERISTICS

- Boom swing, improves use in small places and along the wall.
- KUBOTA D722 three-cylinder diesel engine 14hp – 2500r/min, new generation STAGE V with lower consumption.
- Powerful hydraulic pump **KDK JAPAN**.
- Independent hydraulic traveling motor **EATON USA**.
- Durable 360 ° superstructure swing engine **EATON USA**.
- High standard hydraulic system of valves and controls.
- 2 hydraulic remote ports on the edge of the boom (for use of digger / hammer).
- Boom with hydraulic pipes installed in the center of its upper part to avoid damage.
- Safety lever to lock the main functions of the machine.
- Folding protective bar at the front for easy transport in vans/trucks and its entry into indoor spaces.
- Compact cast counterweight on the back successfully improves performance.
- Maximize stability when digging with the front grader blade.
- The vertically opening hood exposes most of the engine providing easier access to components.
- Standard equipment includes electric starter with 12V starter, hour meter and removable canopy.
- With a wide range of accessories and tools.
- Easy to use with international standard ISO controls.
- LED work light on the boom.
- Digging force in the bucket 1000kg.
- Includes a bucket 400mm.
- Fits through door (93cm).
- Fuel tank 11L.
- EC Conformity.

**M**

€



hp



mm



360



L/min



bar



km/h

**EB12-BOOM**

1040

KUBOTA D722 - 14hp

400

360

16.6

160

1.5

ACCESSORIES

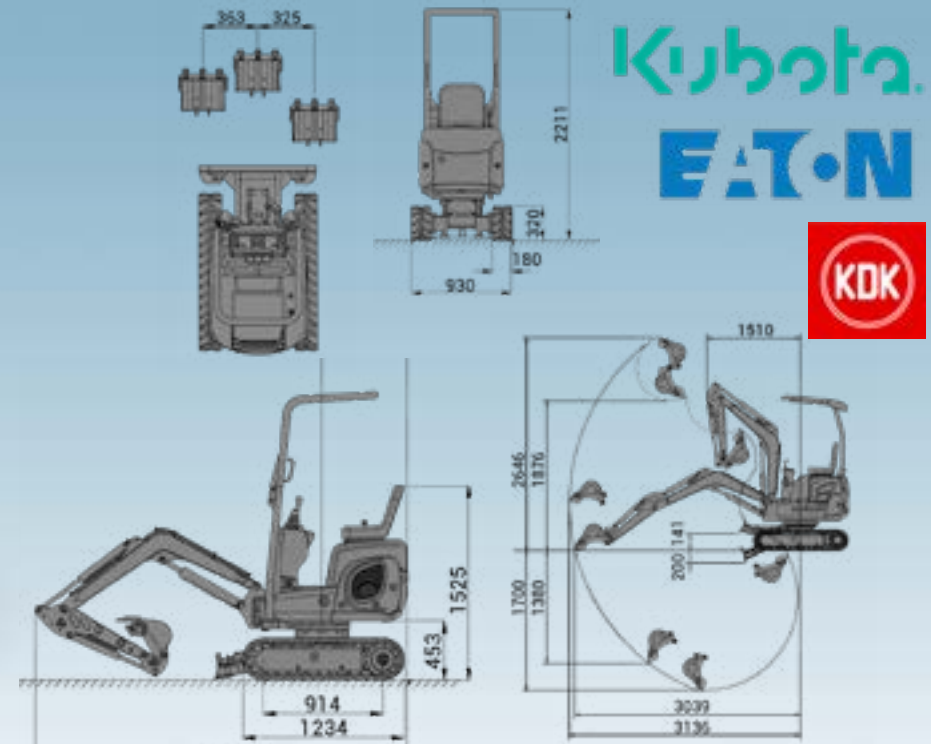
**EB10QUICK**  
**EB10AUGER**  
**EB10HAMMER**  
**EB10BUCKET20**  
**EB10BUCKET80LEVEL**  
**EB10BUCKET80TILT**

Quick attach  
Hydraulic drill with auger  
Hammer  
Bucket 200mm  
Leveling Bucket 800mm  
Hydraulic bucket tilt 800mm

**EB10THUMB**  
**EB10RIPPER**  
**EB10RAKE**  
**EB10GRAPPLER**

Thumb  
Ripper  
Rake  
Grappler





## EN USAGE AND CHARACTERISTICS

- Extendable undercarriage 80 – 95 cm.
- Boom swing, improves use in small places and along the wall.
- KUBOTA D722 three-cylinder diesel engine 14hp – 2500r/min, new generation STAGE V with lower consumption.
- Powerful hydraulic pump **KDK JAPAN**.
- Independent hydraulic traveling motor **EATON USA**.
- Durable 360 ° superstructure swing engine **EATON USA**.
- High standard hydraulic system of valves and controls.
- 2 hydraulic remote ports on the edge of the boom (for use of digger / hammer).
- Boom with hydraulic pipes installed in the center of its upper part to avoid damage.
- Safety lever to lock the main functions of the machine.
- Folding protective bar at the front for easy transport in vans/trucks and its entry into indoor spaces.
- Compact cast counterweight on the back successfully improves performance.
- Maximize stability when digging with the front grader blade.
- The vertically opening hood exposes most of the engine providing easier access to components.
- Standard equipment includes electric starter with 12V starter, hour meter and removable canopy.
- With a wide range of accessories and tools.
- Easy to use with international standard ISO controls.
- LED work light on the boom.
- Digging force in the bucket 1000kg.
- Includes a bucket 400mm.
- Fits through door (93cm).
- Fuel tank 11L.
- EC Conformity.

**M**

€



hp



mm



L/min



bar



km/h

**EB12-XL**

1090

KUBOTA D722 - 14hp

400

360

16.6

160

1.5

ACCESSORIES

**EB10QUICK**  
**EB10AUGER**  
**EB10HAMMER**  
**EB10BUCKET20**  
**EB10BUCKET80LEVEL**  
**EB10BUCKET80TILT**

Quick attach  
Hydraulic drill with auger  
Hammer  
Bucket 200mm  
Leveling Bucket 800mm  
Hydraulic bucket tilt 800mm

**EB10THUMB**  
**EB10RIPPER**  
**EB10RAKE**  
**EB10GRAPPLER**

Thumb  
Ripper  
Rake  
Grappler

# EXCAVATOR **EB12-PRO** boom swing, extendable undercarriage and side levers

**GRAECUS**

**Kubota**  
**EATON**



## EN USAGE AND CHARACTERISTICS

- Side levers improve speed and reduce fatigue while working.
- Extendable undercarriage 80 – 95 cm.
- Boom swing, improves use in small places and along the wall.
- KUBOTA D722 three-cylinder diesel engine 14hp – 2500r/min, new generation STAGE V with lower consumption.
- Powerful hydraulic pump **KDK JAPAN**.
- Independent hydraulic traveling motor **EATON USA**.
- Durable 360 ° superstructure swing engine **EATON USA**.
- High standard hydraulic system of valves and controls.
- 2 hydraulic remote ports on the edge of the boom (for use of digger / hammer).
- Boom with hydraulic pipes installed in the center of its upper part to avoid damage.
- Safety lever to lock the main functions of the machine.
- Folding protective bar at the front for easy transport in vans/trucks and its entry into indoor spaces.
- Compact cast counterweight on the back successfully improves performance.
- Maximize stability when digging with the front grader blade.
- The vertically opening hood exposes most of the engine providing easier access to components.
- Standard equipment includes electric starter with 12V starter, hour meter and removable canopy.
- With a wide range of accessories and tools.
- Easy to use with international standard ISO controls.
- LED work light on the boom.
- Digging force in the bucket 1000kg.
- Includes a bucket 400mm.
- Fits through door (93cm).
- Fuel tank 11L.
- EC Conformity.

**M**

€



hp



mm



360



L/min



bar



km/h

**EB12-PRO**

1180

KUBOTA D722 - 14hp

400

360

18.4

160

1.5

ACCESSORIES

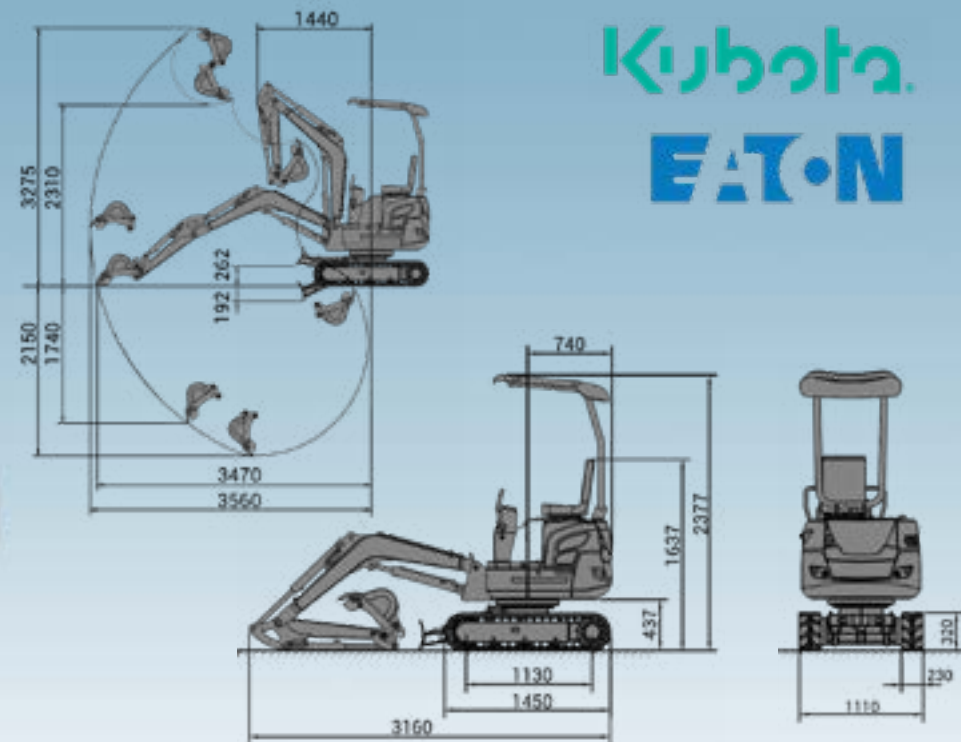
**EB10QUICK**  
**EB10AUGER**  
**EB10HAMMER**  
**EB10BUCKET20**  
**EB10BUCKET80LEVEL**  
**EB10BUCKET80TILT**

Quick attach  
Hydraulic drill with auger  
Hammer  
Bucket 200mm  
Leveling Bucket 800mm  
Hydraulic bucket tilt 800mm

**EB10THUMB**  
**EB10RIPPER**  
**EB10RAKE**  
**EB10GRAPPLER**

Thumb  
Ripper  
Rake  
Grappler





## EN USAGE AND CHARACTERISTICS

- KUBOTA D902 three-cylinder diesel engine 16hp – 2300r/min, new generation STAGE V with lower consumption.
- Powerful hydraulic pump.
- Independent hydraulic traveling motor.
- Durable 360 ° superstructure swing engine **EATON USA**.
- High standard hydraulic system of valves and controls.
- 2 hydraulic remote ports on the edge of the boom (for use of digger / hammer).
- Boom with hydraulic pipes installed in the center of its upper part to avoid damage.
- Safety lever to lock the main functions of the machine.
- Protective bar with canopy.
- Compact cast counterweight on the back successfully improves performance.
- Maximize stability when digging with the front grader blade.
- Rear openable door for easy access during maintenance.
- Standard equipment includes electric starter with 12V starter, hour meter and removable canopy.
- With a wide range of accessories and tools.
- Easy to use with international standard ISO controls.
- LED work light on the boom.
- Digging force in the bucket 1300kg.
- Includes a bucket 400mm.
- Fuel tank 19L.
- EC Conformity.

**M**

€



hp



mm



360°



L/min



bar



km/h

**EB15**

1500

KUBOTA D902 - 16hp

400

360

23.3

160

3

### ACCESSORIES

**EB15QUICK**

Quick attach

**EB15AUGER**

Hydraulic drill with auger

**EB15HAMMER**

Hammer

**EB15BUCKET20**

Bucket 200mm

**EB15BUCKET60LEVEL**

Leveling Bucket 800mm

**EB15BUCKET100LEVEL**

Leveling Bucket 800mm

**EB15BUCKET100TILT**

Hydraulic bucket tilt 800mm

**EB15THUMB**

Thumb

**EB15RIPPER**

Ripper

**EB15RAKE**

Rake

**EB15GRAPPLER**

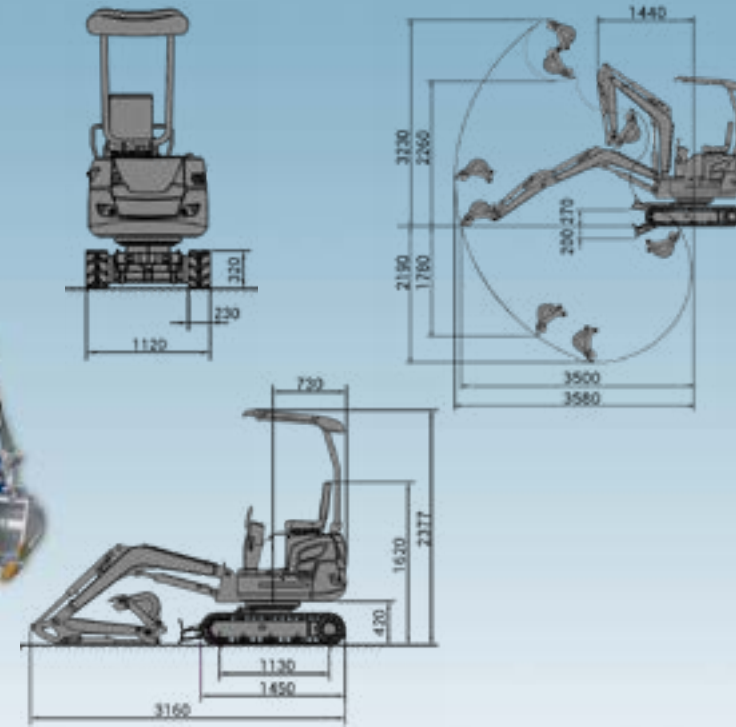
Grappler

# EXCAVATOR EB17-ADVANCED boom swing and side levers



EATON

Kubota



## EN USAGE AND CHARACTERISTICS

- Side levers improve speed and reduce fatigue while working.
- Boom swing, improves use in small places and along the wall.
- KUBOTA D902 three-cylinder diesel engine 16hp – 2300r/min, new generation STAGE V with lower consumption.
- Powerful hydraulic pump.
- Independent hydraulic traveling motor.
- Durable 360 ° superstructure swing engine **EATON USA**.
- High standard hydraulic system of valves and controls.
- 2 hydraulic remote ports on the edge of the boom (for use of digger / hammer).
- Boom with hydraulic pipes installed in the center of its upper part to avoid damage.
- Safety lever to lock the main functions of the machine.
- Protective bar with canopy.
- Compact cast counterweight on the back successfully improves performance.
- Maximize stability when digging with the front grader blade.
- Rear openable door for easy access during maintenance.
- Standard equipment includes electric starter with 12V starter, hour meter and removable canopy.
- With a wide range of accessories and tools.
- Easy to use with international standard ISO controls.
- LED work light on the boom.
- Digging force in the bucket 1400kg.
- Includes a bucket 400mm.
- Fuel tank 19L.
- EC Conformity.

M

€



hp



mm



L/min



bar



km/h

EB17-ADVANCED	1700	KUBOTA D902 - 16hp	400	360	39.6	160	1.7 - 3
---------------	------	--------------------	-----	-----	------	-----	---------

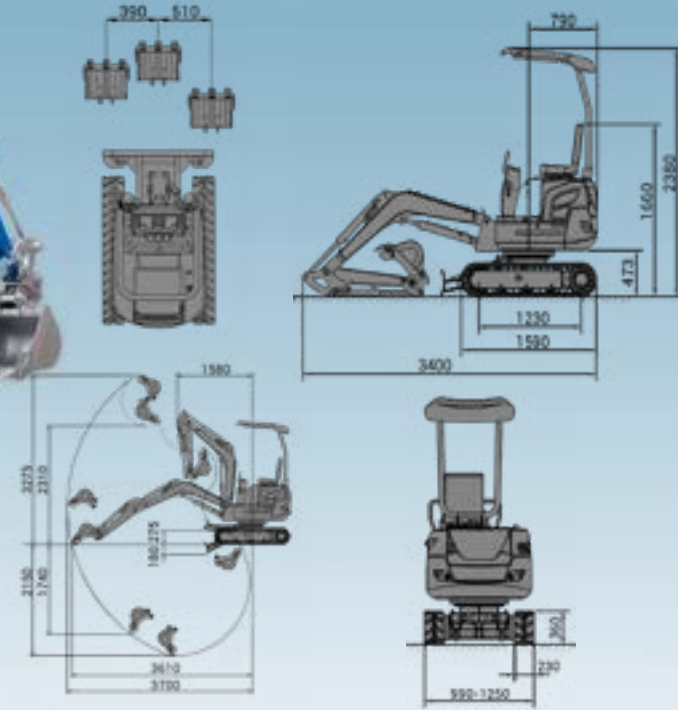
### ACCESSORIES

**EB15QUICK**  
**EB15AUGER**  
**EB15HAMMER**  
**EB15BUCKET20**  
**EB15BUCKET60LEVEL**  
**EB15BUCKET100LEVEL**  
**EB15BUCKET100TILT**

Quick attach  
Hydraulic drill with auger  
Hammer  
Bucket 200mm  
Leveling Bucket 800mm  
Leveling Bucket 800mm  
Hydraulic bucket tilt 800mm

**EB15THUMB**  
**EB15RIPPER**  
**EB15RAKE**  
**EB15GRAPPLER**

Thumb  
Ripper  
Rake  
Grappler



## EN USAGE AND CHARACTERISTICS

- Side levers improve speed and reduce fatigue while working.
- Extendable undercarriage 99 – 125cm.
- Boom swing, improves use in small places and along the wall.
- The width of the leveling blade can be easily and quickly adjusted with a pin to match the width of the extendable tracks.
- KUBOTA D902 three-cylinder diesel engine 16hp – 2300r/min, new generation STAGE V with lower consumption.
- Powerful hydraulic pump.
- Independent hydraulic traveling motor.
- Durable 360 ° superstructure swing engine **EATON USA**.
- High standard hydraulic system of valves and controls **WALVOIL ITALY**.
- 2 hydraulic remote ports on the edge of the boom (for use of digger / hammer).
- Boom with hydraulic pipes installed in the center of its upper part to avoid damage.
- Safety lever to lock the main functions of the machine.
- Protective bar with canopy.
- Compact cast counterweight on the back successfully improves performance.
- Rear openable door for easy access during maintenance.
- Standard equipment includes electric starter with 12V starter, hour meter and removable canopy.
- With a wide range of accessories and tools.
- Easy to use with international standard ISO controls.
- LED work light on the boom.
- Digging force in the bucket 1400kg.
- Includes a bucket 400mm.
- Fuel tank 19L.
- Passes through door (99cm).
- EC Conformity.

**M**

€



hp



mm



360°



L/min



bar



km/h

**EB20-PRO**

1700

KUBOTA D902 - 16hp

400

360

39.6

160

1.9-3.4

ACCESSORIES

**EB15QUICK**

Quick attach

**EB15AUGER**

Hydraulic drill with auger

**EB15HAMMER**

Hammer

**EB15BUCKET20**

Bucket 200mm

**EB15BUCKET60LEVEL**

Leveling Bucket 800mm

**EB15BUCKET100LEVEL**

Leveling Bucket 800mm

**EB15BUCKET100TILT**

Hydraulic bucket tilt 800mm

**EB15THUMB**

Thumb

**EB15RIPPER**

Ripper

**EB15RAKE**

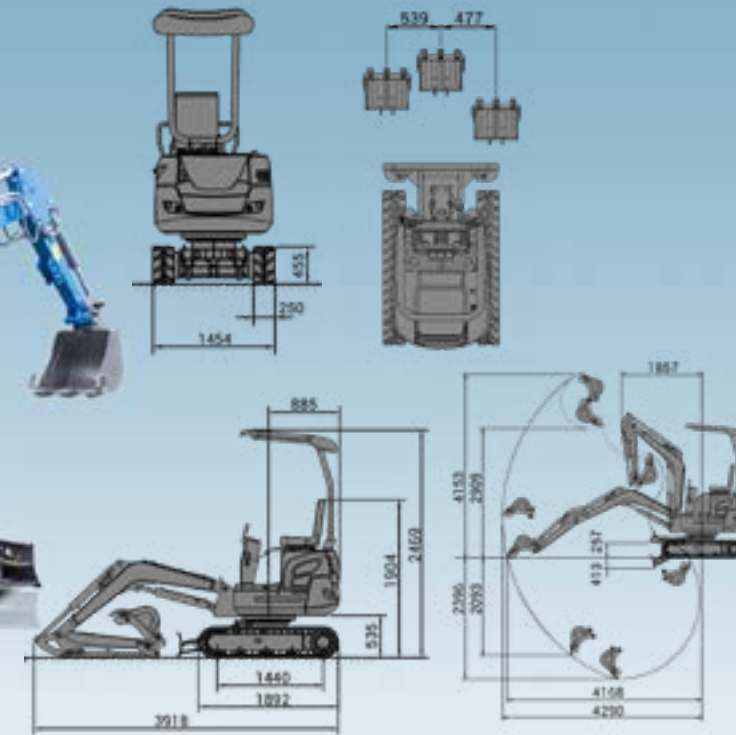
Rake

**EB15GRAPPLER**

Grappler



# EXCAVATOR **EB27-PRO** boom swing, extendable undercarriage and side levers



## EN USAGE AND CHARACTERISTICS

- Air Condition in the **EB27C-PRO** cab model
- Side levers improve speed and reduce fatigue while working.
- Extendable undercarriage 114 – 140cm
- Boom swing, improves use in small places and along the wall.
- The width of the leveling blade can be easily and quickly adjusted with a pin to match the width of the extendable tracks.
- KUBOTA D1105 three-cylinder diesel engine 19hp – 2200r/min, new generation STAGE V with lower consumption.
- Powerful hydraulic pump.
- Independent hydraulic traveling motor.
- Durable 360° superstructure swing engine **EATON USA**.
- High standard hydraulic system of valves and controls
- 2 hydraulic remote ports on the edge of the boom (for use of digger / hammer).
- Boom with hydraulic pipes installed in the center of its upper part to avoid damage.
- Safety lever to lock the main functions of the machine.
- Protective bar with canopy.
- Compact cast counterweight on the back successfully improves performance.
- Rear openable door for easy access during maintenance.
- Standard equipment includes electric starter with 12V starter, hour meter and removable canopy.
- With a wide range of accessories and tools.
- Easy to use with international standard ISO controls.
- LED work light on the boom.
- Digging force in the bucket 1700kg.
- Includes a bucket 450mm.
- Fuel tank 22L.
- EC Conformity.

**M**

€



hp



mm



L/min



bar



km/h

<b>EB27-PRO</b>	2.550	KUBOTA D1105 - 19hp	450	360	61.9	220	1.7 - 3.0
<b>EB27C-PRO</b>	2.700	KUBOTA D1105 - 19hp	450	360	61.9	220	1.7 - 3.0

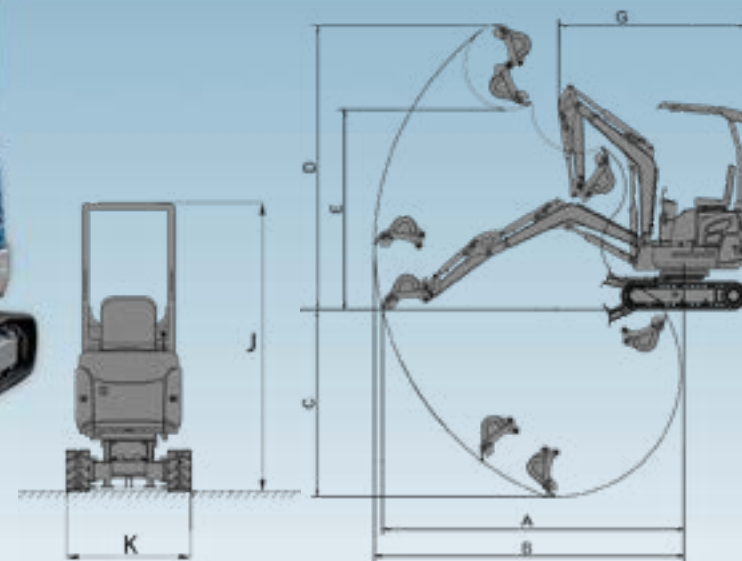
## ACCESSORIES

**EB27QUICK**  
**EB27AUGER**  
**EB27HAMMER**  
**EB27BUCKET20**  
**EB27BUCKET80LEVEL**  
**EB27BUCKET100LEVEL**  
**EB27BUCKET100TILT**

Quick attach  
 Hydraulic drill with auger  
 Hammer  
 Bucket 200mm  
 Leveling Bucket 800mm  
 Leveling Bucket 800mm  
 Hydraulic bucket tilt 800mm

**EB27THUMB**  
**EB27RIPPER**  
**EB27RAKE**  
**EB27GRAPPLER**

Thumb  
 Ripper  
 Rake  
 Grapppler



## EN USAGE AND CHARACTERISTICS

- The excavator with the cabin is equipped with aircondition.
- Superstructure rotating within the width of the tracks (zero tail).
- Boom rotation, improves use in small places and along the wall.
- Hydraulically foldable rubber tracks.
- 3-cylinder diesel engine D1703, water-cooled **Kubota Japan**, 34hp/ at 2800rpm.
- High standard hydraulic system of valves and controls.
- Independent hydraulic traveling motor **LKC KOREA**.
- Durable 360 ° superstructure swing engine **EATON USA**.
- Powerful hydraulic pump **TF KOREA**
- The width of the leveling blade can be easily and quickly adjusted with a pin to match the width of the folding tracks.
- 2-speed selectable slow-fast with Hi-Lo switch.
- Hydraulic supply line on the boom for future connection of a hammer or other accessories (dual power line).
- Compact cast counterweight on the back successfully improves performance.
- Side boom position to maximize use.
- Traction force 2700kg.
- Includes a bucket 550mm.
- Side control levers reduce fatigue and maximize space making it easier to get in and out of the machine.
- Fuel tank 26 liter.
- Protective bar with hood.
- Electronic control panel.
- Electric start with 12V starter.
- EC Conformity.

**M**

€



hp



mm



L/min



bar



km/h

<b>EB35-PRO</b>	3300	Diesel Kubota 34	550	360	99	250	3.2
<b>EB35C-PRO</b>	3500	Diesel Kubota 34	550	360	99	250	3.2

**M A B C D E G J K**

mm mm mm mm mm mm mm mm

**EB35** 4740 4830 2830 4560 3180 4522 2485 1550

ACCESSORIES

**EB35BUCKET100TILT**  
**EB35HAMMER**  
**EB35AUGER**

Hydraulic bucket tilt 1000mm  
Hammer for excavator  
Hydraulic drill 300mm

**EB35QUICK-H**  
**EB35RIPPER**  
**EB35GRAPPLER**  
**EB35RAKE**  
**EB35THUMB-H**  
**EB35BUCKET30**  
**EB35BUCKET80LEVEL**  
**EB35BUCKET100LEVEL**

Quick attach  
Ripper for excavator  
Grapple for excavator  
Rake for excavator  
Thumb for excavator  
Bucket for excavator 300mm  
Bucket for excavator 800mm  
Bucket for excavator 1000mm



