



Vehicles at Work

XISAFFE

“ AERIAL WORKING
IN A SAFE AND
EFFICIENT WAY ”

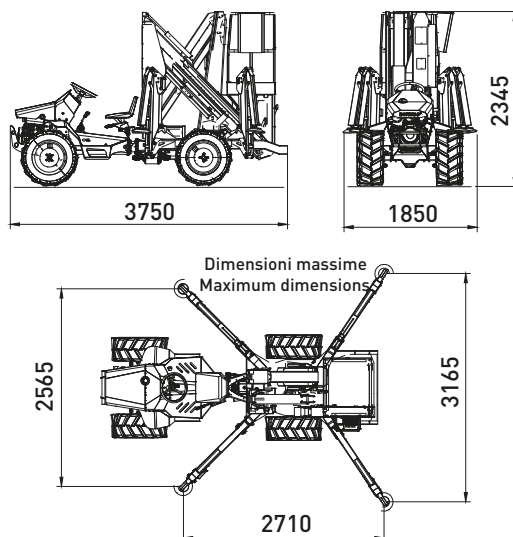
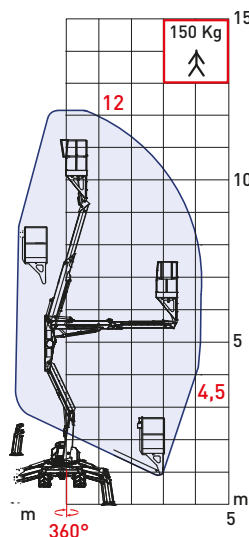


Vehicles at Work

ERREPPi SRL - Vehicles at Work
Via dell'Industria, 2 Z.i. - Bevagna (PG) - Italy
Tel +39 0742 360592 - info@erreppi.com - www.erreppi.com

WORKING SPACE

The aerial platform is controlled by the operator at all times



TECHNICAL FEATURES

- Working height 12 m
- Maximum lateral extension 4.5 m
- Carrying capacity at basket 150 kg
- Articulated telescopic boom and pantograph to obtain an override height of 5 m
- 4 pantograph outriggers with individual controls
- Possibility to stabilize with an uneven ground level with up to 700m difference
- 100% hydraulic controls
- There is no need of any limiting device for lateral extension (100% SAFE)
- 360° basket rotation
- Electric power outlet 230 V in the basket
- Compressed air outlet in the basket
- Engine start & stop from the basket
- 4x4 tractor with central pivot $\pm 15^\circ$
- Yanmar engine diesel fuel
- Flotation tyres for uneven and soft ground

Xiraffe is the “engineering result” of a successfully combining of an all terrain tractor with central oscillation pivot and an aerial platform for improving the working conditions and worker productivity in tall trees or palms, whereby the operator can independently move “in-field” and then get to the “best working” position quickly by utilizing its excellent power to weight ratio due to the tractor high torque low fuel consumption diesel engine. The hydraulic controls provide “precise” smooth movements of the aerial platform giving the operator the confidence to work quickly, safely and very productively. By positioning the operator in the “Best Working Position” he can operate any work tools with minimal effort safely thus reducing the work stress and tiredness.

The Xiraffe provides the farmer with a big step forward in the mechanisation of tall tree crops!