

**PREET 4949**  
**HORNETT 4x4**  
BACKHOE LOADER WITH EXTENDED DIPPER

POWERED BY  
**BSV**  
STAGE ENGINE



**XTENDED**  
DIPPER



**POWERING PROGRESS WORLDWIDE**



**ENGINE** New Generation Engine Complies with BS-V Norms with (ECU). Output power & torque rise while offering exceptional fuel efficiency, Environment Friendly & long Life Performance.

MODEL :	4R1190 NA1- BS V (KIRLOSKAR)
Type	4 Stroke, DI, Diesel Engine
Fuel Pump Type	CRDI Type
High Idle Speed	2335 ± 50
Horsepower @2200 rpm	Gross 74.5 hp (54.8 kW)
Max Torque @ 1500 rpm	305 Nm ± 5% (Gross)

#### TRANSMISSION / POWER TRAIN

**CARRARO TRANSMISSION WITH SYNCHRO SHUTTLE & DIFFERENT GEAR OPTIONS WITH 4 SPEED (4 FORWARD & 4 REVERSE).**

Transmission (Standard)	4F -4R Manual Power shift Transmission, Electrically actuated with twist grip.
Gear Ratios	1st F-1:5.603 1st R-1:5.603
	2nd F-1:3.481 2nd R-1:3.481
	3rd F-1:1.585 3rd R-1:1.585
	4th F-1:0.793 4th R-1:0.793

#### DIPPER

Extended Dipper	Reach: Ground to Slew Centre- 6.40 m
-----------------	--------------------------------------

#### AXLE

Front Axle	Carraro make Front Axle drive with Equal turn, Power Steering, Hydraulic Supply from Independent steering pump & high oscillation.
Rear Axle	Rigidly Mounted, Incorporates Carraro Max torque proportioning differential, driven by short propler shaft.

#### BRAKE

Service Type :	Brake with Hyd. Actuated, Dual line oil immersed multi disc type wet brakes on the rear axle.
Parking Type :	Axle Mounted Spring applied Hydraulic Release

#### ELECTRICAL

Service Type :	12 volts/150 Ah with full road lighting, Horn & reverse alarm.
Alternator Output	90 Amp.

#### HYDRAULICS

Pump Type	Tandem Pump which Provides great performance with fuel efficiency
Maximum Pump Capacity	54 cc / 118 Lpm @ 2200 rpm)
System Pressure	220 Bar

#### STEERING

Type	Front Wheel Steering with Heavy Duty Double acting Cylinder system provides Equal turn with Quick Response.
------	---

\*\* Preet makes continuous improvements to all its products & reserved the right to change specification without any notice. Photo & illustrations may contain standard and optional equipment.

#### TURNING CIRCLE

Outside Front Wheels (mtr) (without brake)	8.95 mtr.
Outside Widest Loader Bucket (mtr) (without brake)	11.6 mtr.
Outside Front Wheels (mtr) (with brake)	7.3 mtr.
Outside Widest Loader Bucket (mtr) (with brake)	9.6 mtr.

#### TYRE

**Standard (Traction/ Industrial ) Optional (Heavy Duty/HD)**

Front	12.5/80-18 (12 PR)
Rear	16.9 -28 (12 PR) / 14-25 (20 PR)

#### SHIPPING WEIGHT

Gross Weight	8050 ± 100 kgs.
--------------	-----------------

#### SPEED

Gear	Forward km/hr	Reverse km/hr
1st	5.32	5.32
2nd	8.56	8.56
3rd	18.79	Not Recommended
4th	37.55	Not Recommended

( Above is with standard tyres )

#### SERVICE

Hydraulic System (Oil)	150 Ltrs.
Fuel Tank	120 Ltrs.
Engine Coolant	20 Ltrs.
Engine Oil	9.5 Ltrs.
Transmission	19 Ltrs.
Rear Axle	17 (14+3) Ltrs.
Front Axle	13 (10+3) Ltrs.

#### CABIN

Ergonomically designed cabin with contemporary styling, Tinted cab glasses provide better visibility and sun protection, Day & Night time visibility.

#### OPTIONAL FEATURES

Tele matic GPS SYSTEM (Global Positioning System)
Hydraulic Rock breaker Piping
HVAC Cabin
Heavy Duty Tyres

#### OPTIONAL ATTACHMENTS

6 in 1 loader bucket	1.1 CuM.
Excavator bucket & Trench Bucket	0.06 cu.m, 0.09 cu.m, & 0.12 cu.m

#### OPTIONAL ENGINES

KIRLOSKAR Engine	74.5 HP, 300 Nm Max Torque - (BS-IV)
------------------	--------------------------------------

#### STATIC DIMENSIONS

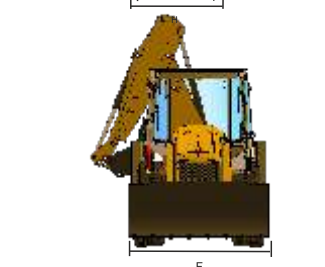
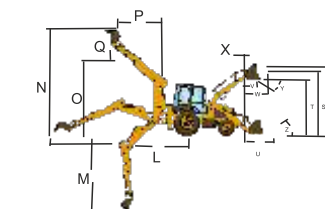
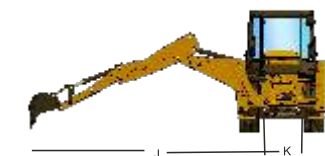
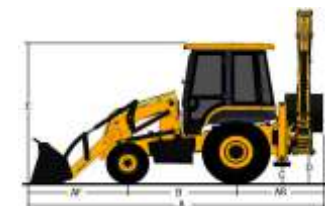
A Overall length	6.13 m
B Wheelbase	2.17 m
C Min. ground clearance	0.31 m
D Slew ground clearance	0.61 m
E Height to top of cab	3.00 m
F Width over bucket	2.33 m
G Overall height	3.82 m
H Track width - Front	1.89 m
I Track width - Rear	1.74 m / 1.67 m
AR Rear over hang	1.73 m
AF Front over hang	2.24 m
Slew center to Rear Axle	1.32 m

#### EXCAVATOR DIMENSIONS

J Reach-ground level to slew centre	6.40 m
K King post travel	1.00 m
L Reach-ground level to rear wheel centre	7.80 m
M Max. dig depth	5.20 m
N Max. working height	6.12 m
O Max. load over height	4.52 m
P Reach at full height to slew centre	2.60 m
Q Bucket rotation	175°
Bucket Tear out Force	4700 kgf
Dipper Tear out Force	3200 kgf
Lift Capacity to Bucket pivot at all reach	1100 kgf
Excavator Standard Bucket Capacity	0.18 Cu.m
Standard Bucket Width	0.59 m

#### LOADER DIMENSION

R Pin height	3.51 m
S Load over height	3.36 m
T Dump height	2.80 m
U Reach at ground	1.50 m
V Reach at full height-Bucket dumped	0.80 m
W Max. reach at full height	1.37 m
X Pin forward reach	0.47 m
Y Dump angle	53°
Z Rollback at ground	45°
Shoval Breakout force	6100 kgf
Loader Arm Breakout force	5300 kgf
Standard Loader Bucket Capacity	1.1 Cu.m
Pay load	1800 kgf



**PREET CONSTRUCTION EQUIPMENTS PVT. LTD.**  
**PREET AGRO INDUSTRIES PVT. LTD.**

H.O. & Plant : Patiala Road, Nabha - 147 201 Punjab, India.

Ph.: +91-1765-220400, 222609

Email : info@preet.co | www.preet.co

Toll Free : 1800-419-0349



Authorized Dealer: